

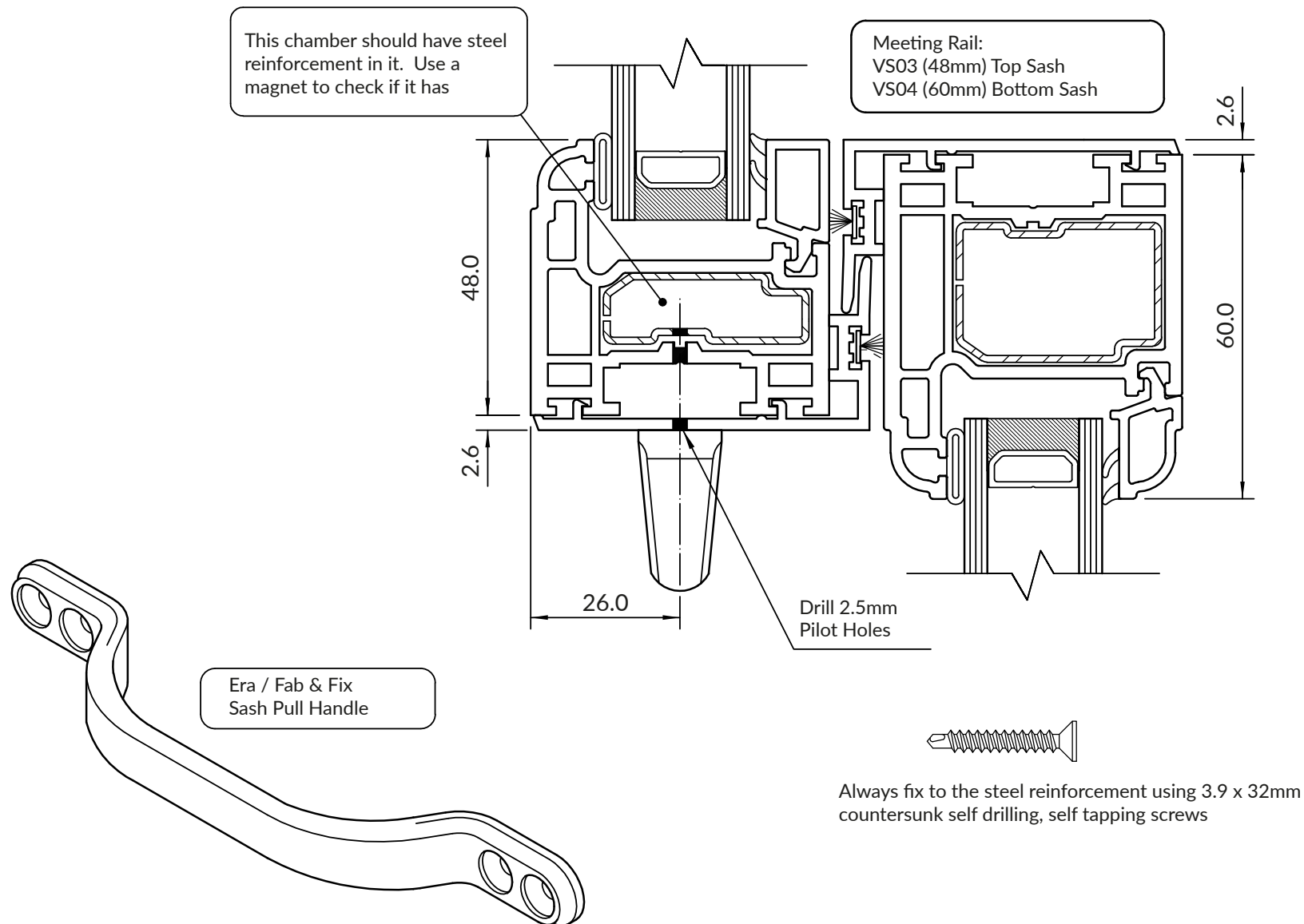


Legacy uPVC Sliding
Sash Windows
Hardware Installation Guide

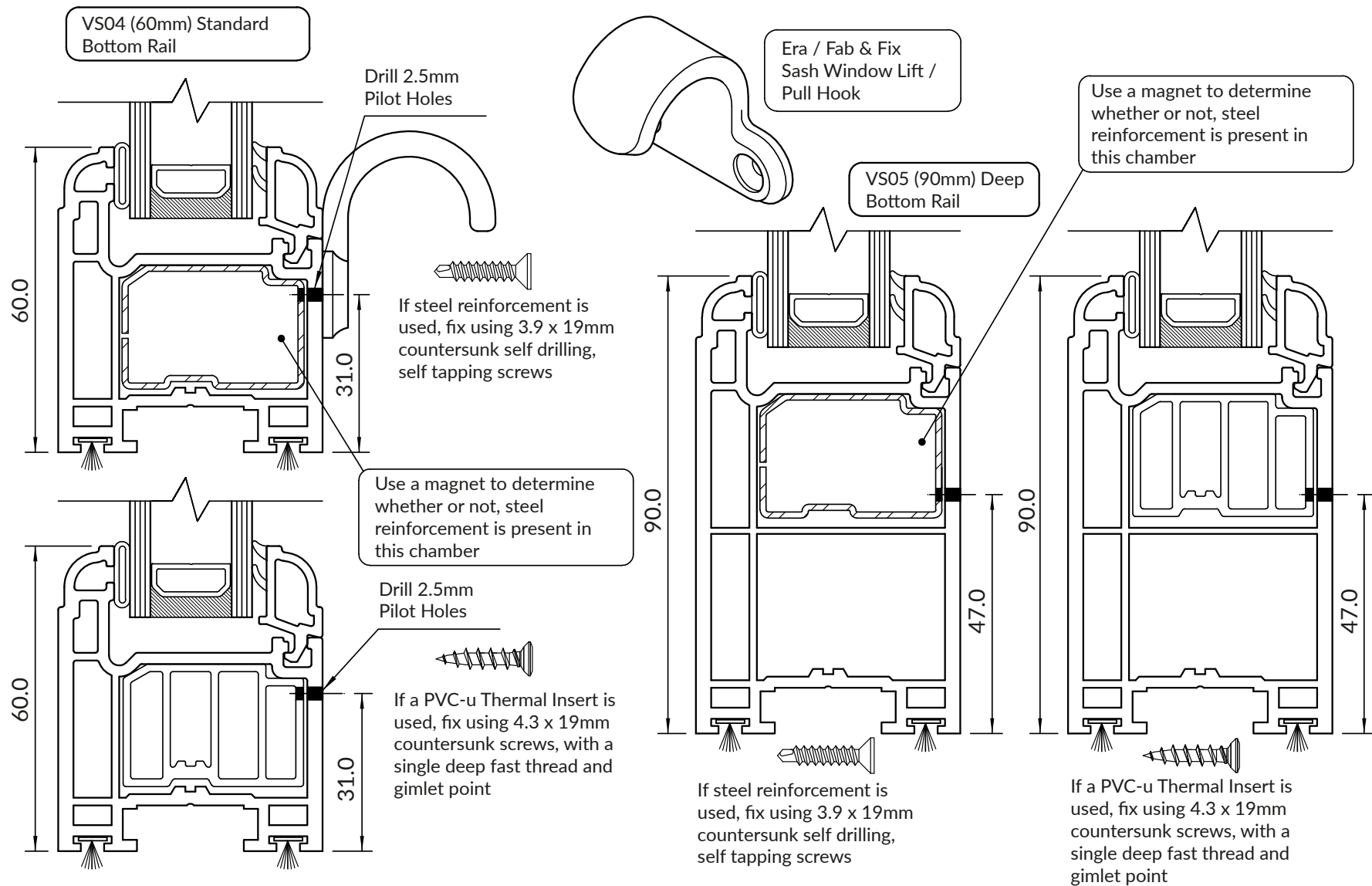
QUICK SLIDE
WINDOWS & DOORS



Fitting Sash Pull Handle to the Meeting Rail of the Top Sash

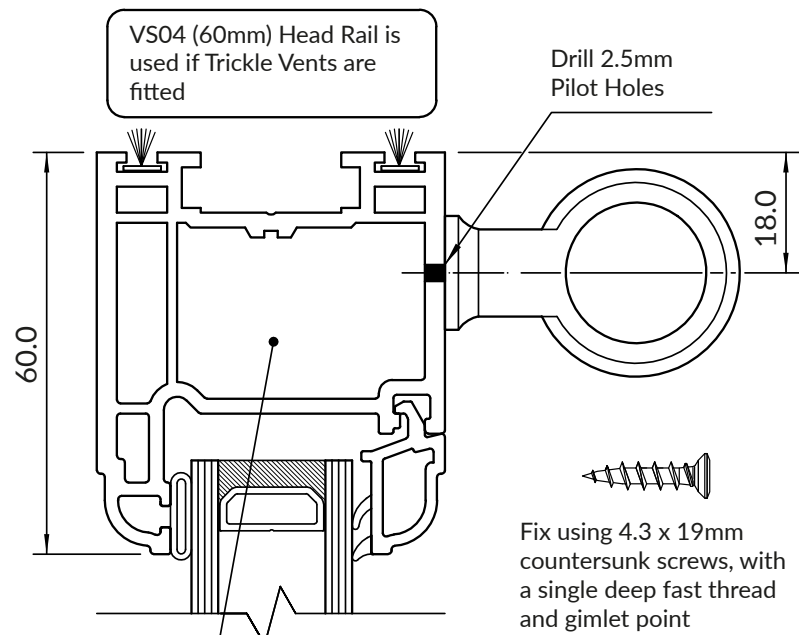


Fitting Sash Hooks to the Bottom Rail of the Bottom Sash



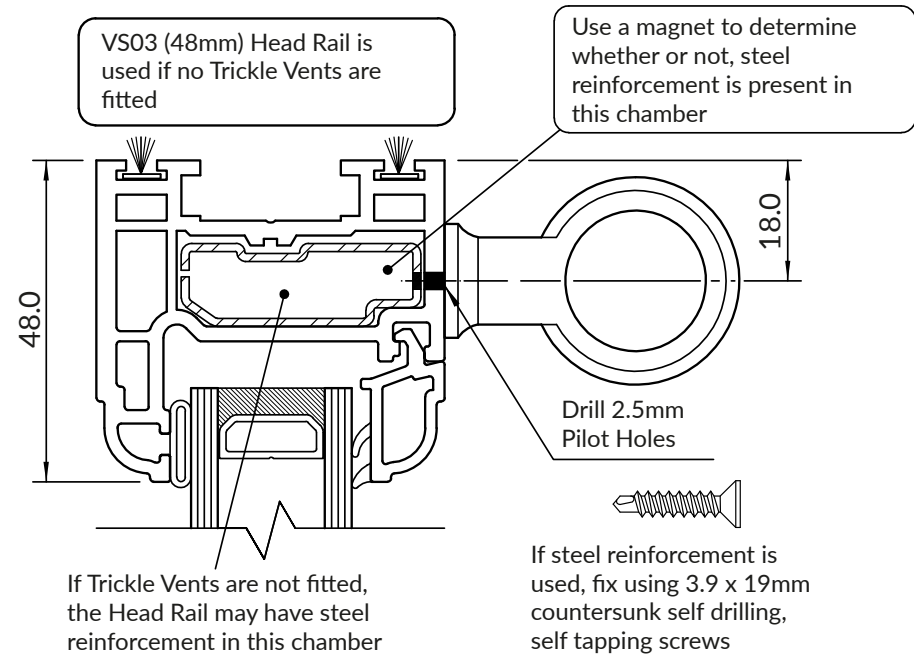
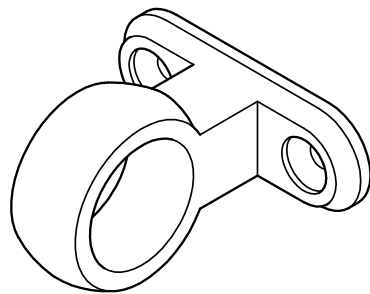


Fitting Pole Eyes to the Head of the Top Sash

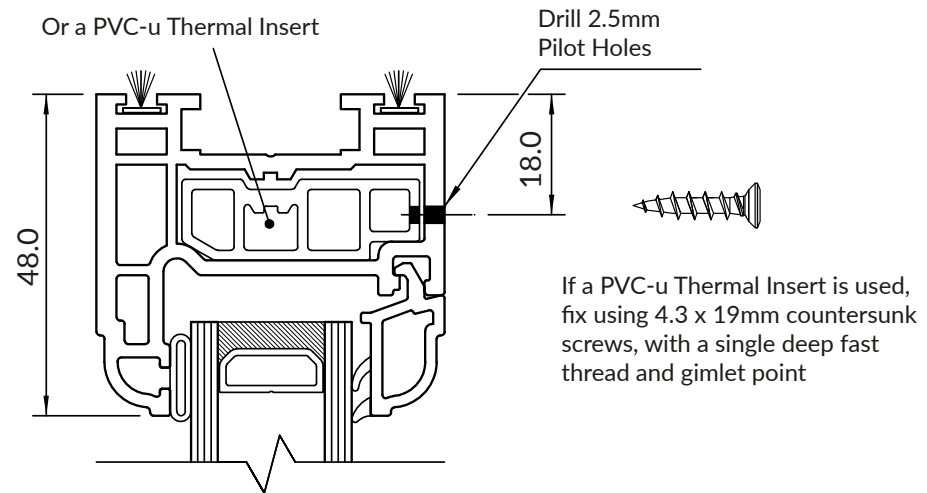


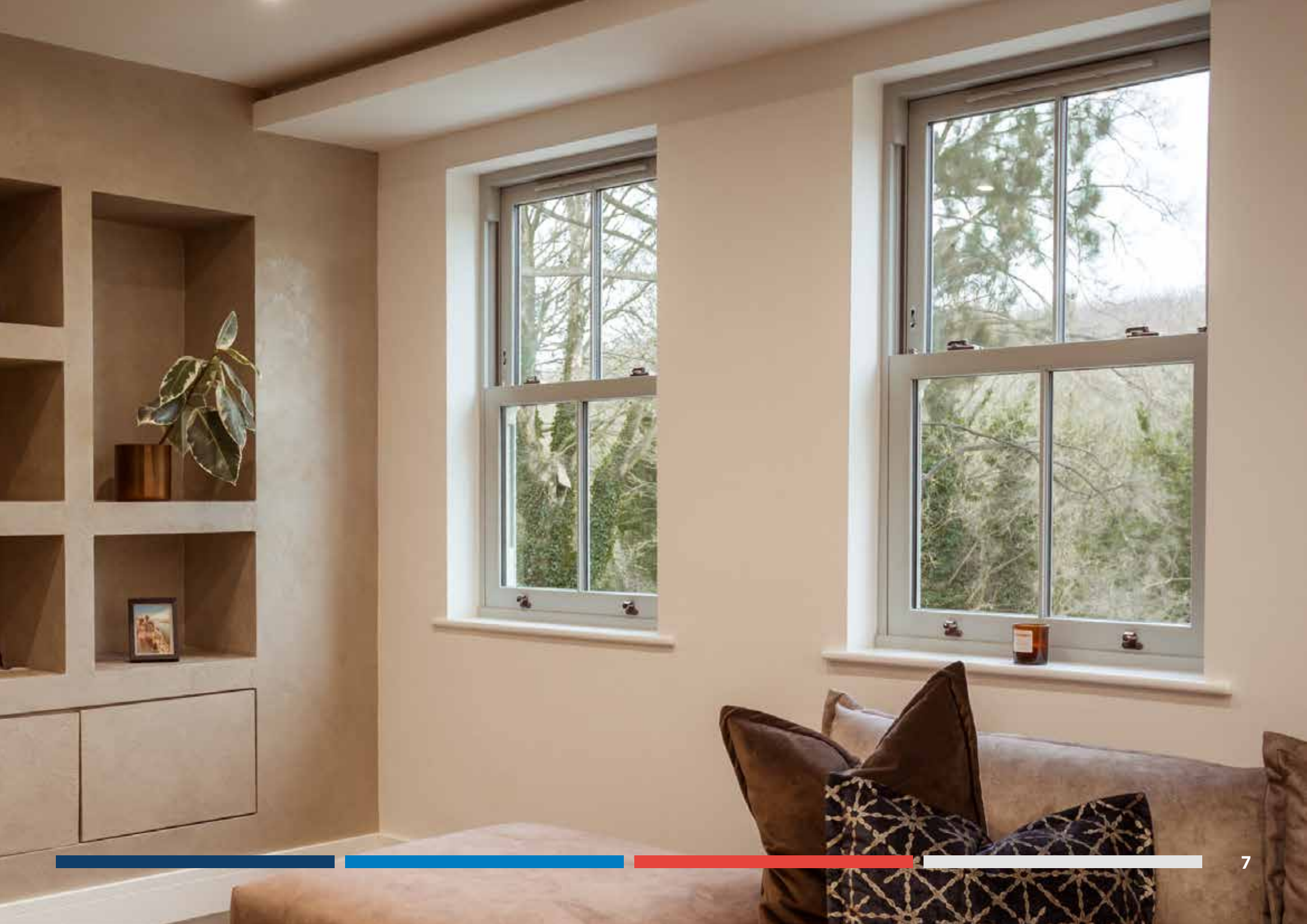
If Trickle Vents are fitted, the Head Rail will not have an insert in this chamber

Era / Fab & Fix Sash Window Ring Pull / Sash Eye



Or a PVC-u Thermal Insert







Tel: 0844 5610 623 Email: sales@quickslide.co.uk
Heaton Estate, Bradford Road, Brighouse, West Yorkshire, HD6 4BW