

Concealed Head Vent Installation Guide

**OBS! YOU MUST
CHECK THE SIZES
AND SPECIFICATION OF
YOUR NEW PRODUCTS
PRIOR TO REMOVING
THE EXISTING
PRODUCTS**

3-Step Installation Guide

Step 1: Preparation

Position the canopy and grille insert onto the top of the outer frame (VS41). This must always be fitted to the external face. Ensure both sides of the canopy are flush with the sides of the frame.

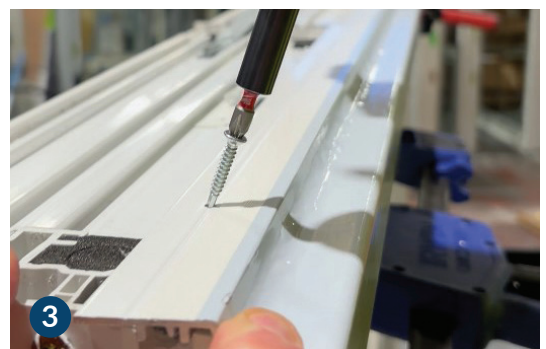
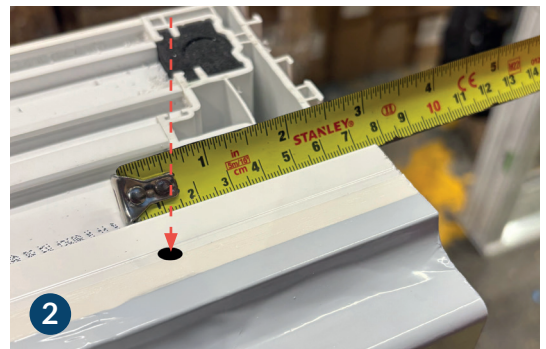
Step 2: Drilling

Mark the screw positions along the die line closest to the external face of the canopy:

- » 75 mm from each end.
- » For lengths up to 600mm: one screw at the centre.
- » For lengths over 600mm: two screws evenly spaced between the end holes.
- » Pre-drill through the aluminium using a 5mm drill.
- » Countersink the holes if required.

Step 3: Fixing

Using wood/gimlet screw (recommended 4.3 x 16-25mm long), secure the canopy to the outer frame. Angle the screws slightly towards the internal face to pull the grille tight against the frame.



QUICK SLIDE
WINDOWS & DOORS

Tel: 0844 5610 623 Email: sales@quickslide.co.uk
Heaton Estate, Bradford Road, Brighouse, West Yorkshire, HD6 4BW