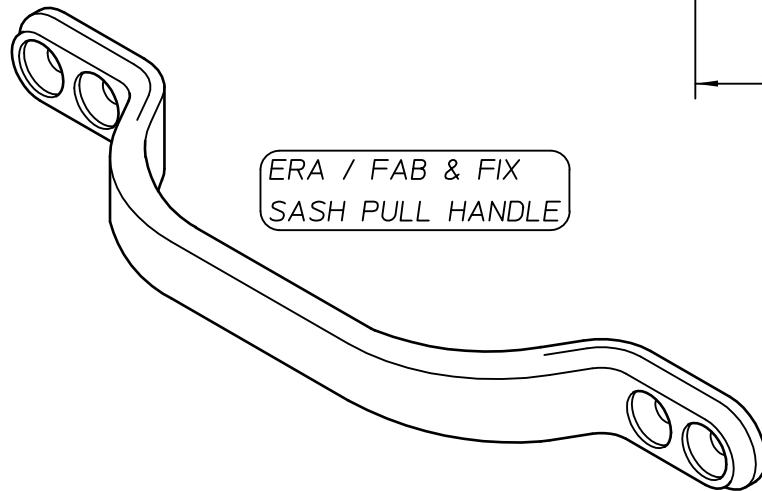
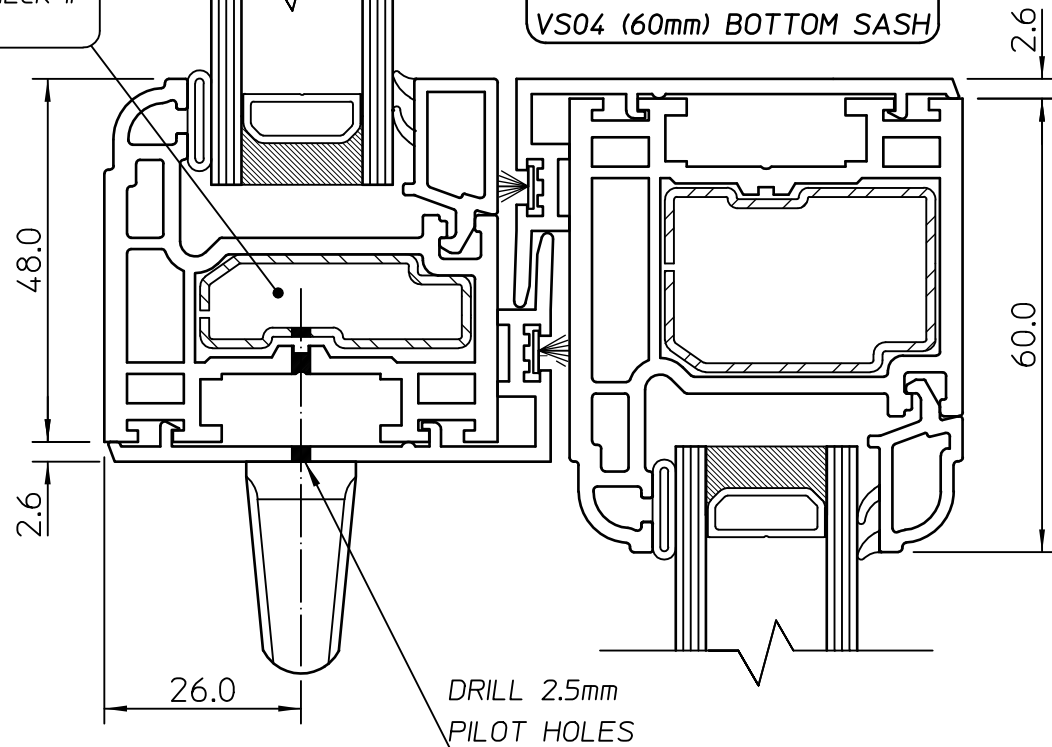


FITTING SASH PULL HANDLE, TO THE MEETING RAIL OF THE TOP SASH

THIS CHAMBER SHOULD HAVE STEEL REINFORCEMENT IN IT USE A MAGNET TO CHECK IF IT HAS

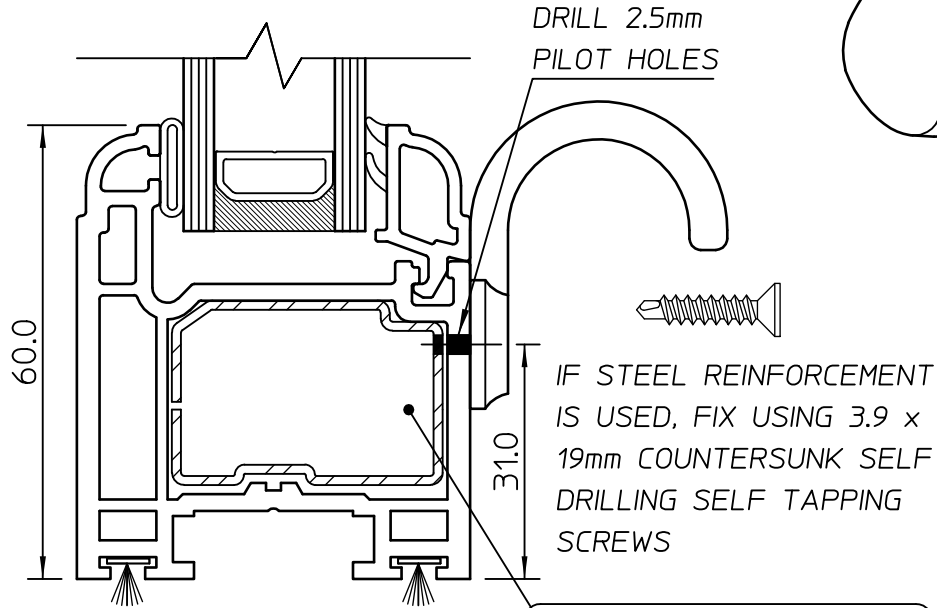
MEETING RAIL:
VS03 (48mm) TOP SASH
VS04 (60mm) BOTTOM SASH



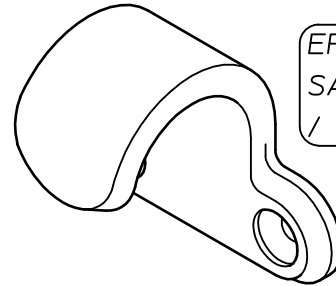
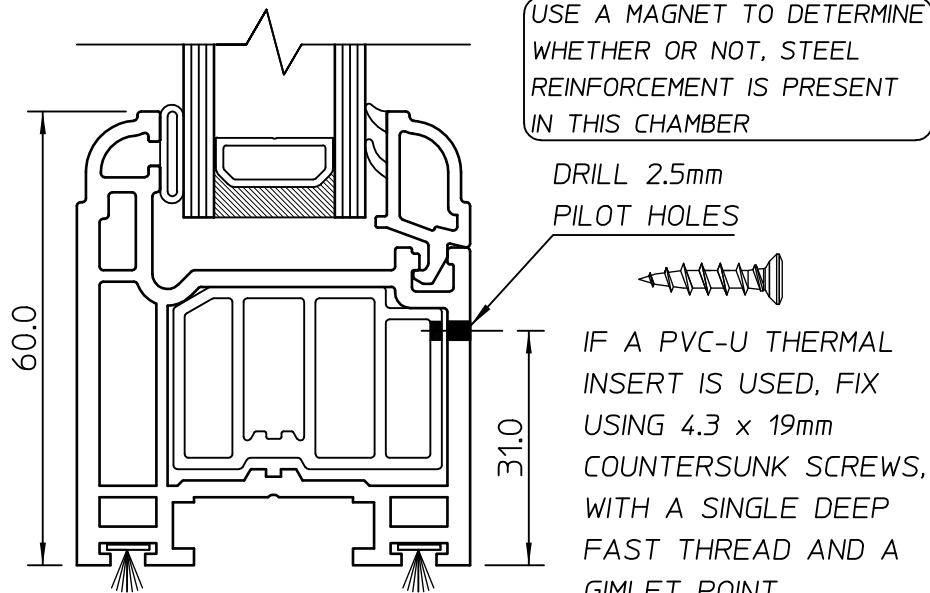
ALWAYS FIX TO THE STEEL REINFORCEMENT
USING 3.9 x 32mm COUNTERSUNK SELF DRILLING
SELF TAPPING SCREWS

FITTING SASH HOOKS TO THE BOTTOM RAIL OF THE BOTTOM SASH

VS04 (60mm) STANDARD
BOTTOM RAIL

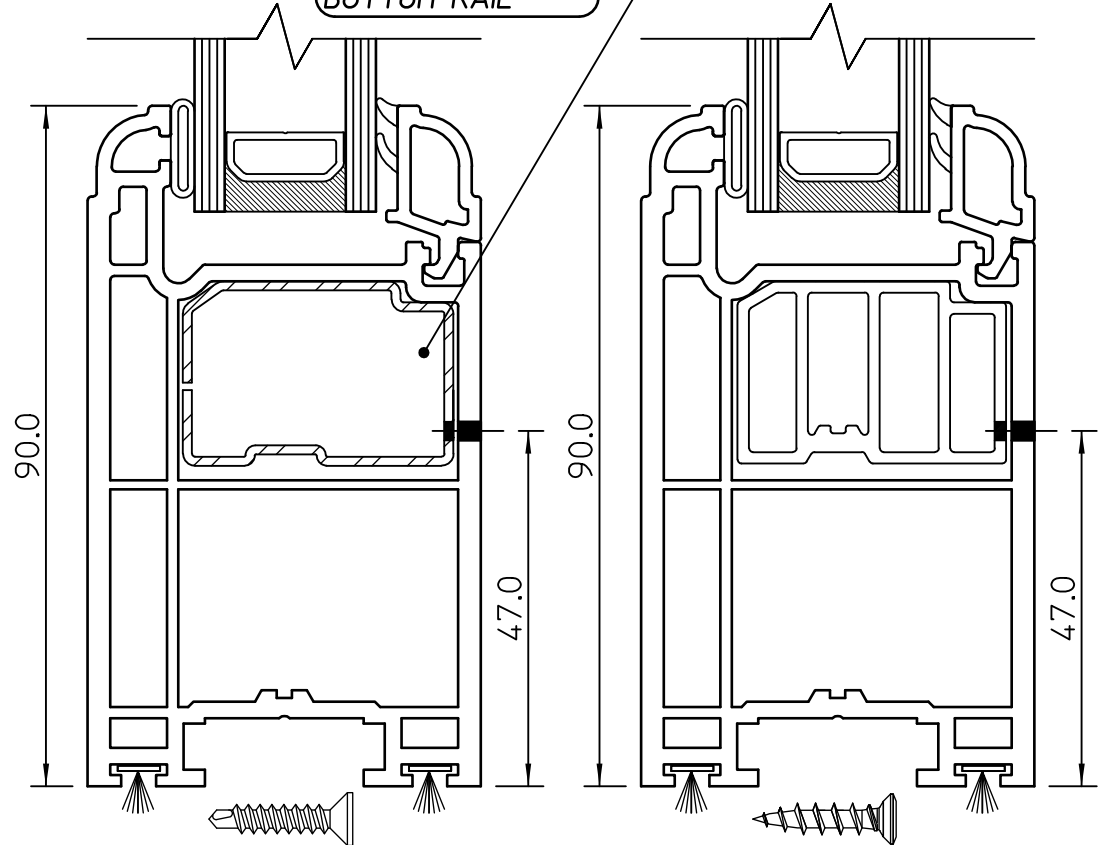


USE A MAGNET TO DETERMINE
WHETHER OR NOT, STEEL
REINFORCEMENT IS PRESENT
IN THIS CHAMBER



ERA / FAB & FIX
SASH WINDOW LIFT
/ PULL HOOK

VS05 (90mm) DEEP
BOTTOM RAIL



USE A MAGNET TO DETERMINE
WHETHER OR NOT, STEEL
REINFORCEMENT IS PRESENT
IN THIS CHAMBER

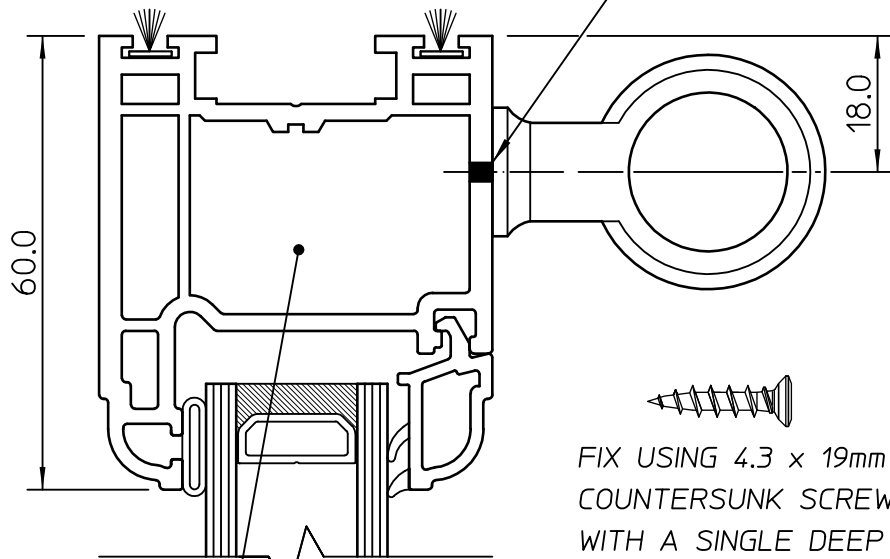
IF STEEL REINFORCEMENT
IS USED, FIX USING 3.9 x
19mm COUNTERSUNK SELF
DRILLING SELF TAPPING
SCREWS

IF A PVC-U THERMAL INSERT
IS USED, FIX USING 4.3 x 19mm
COUNTERSUNK SCREWS,
WITH A SINGLE DEEP FAST
THREAD AND A GIMLET POINT

FITTING POLE EYES TO THE HEAD OF THE TOP SASH

VS04 (60mm) HEAD RAIL
USED IF TRICKLE VENTS
ARE FITTED

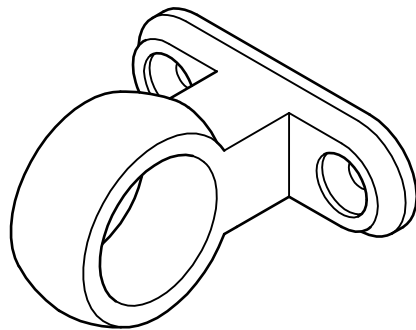
DRILL 2.5mm
PILOT HOLES



FIX USING 4.3 x 19mm
COUNTERSUNK SCREWS,
WITH A SINGLE DEEP
FAST THREAD AND A
GIMLET POINT

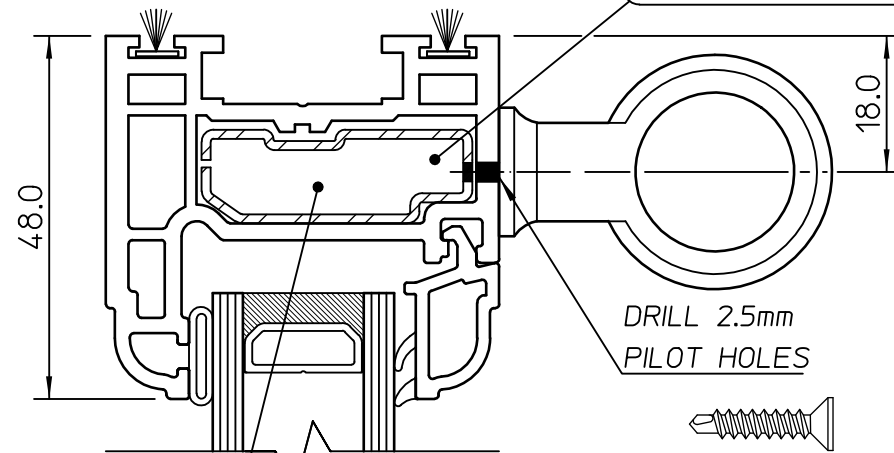
If Trickle Vents are fitted
the head rail will not have
an insert in this chamber

ERA / FAB & FIX
SASH WINDOW RING
PULL / SASH EYE



VS03 (48mm) HEAD RAIL IS
USED IF NO TRICKLE VENTS
ARE FITTED

USE A MAGNET TO DETERMINE
WHETHER OR NOT, STEEL
REINFORCEMENT IS PRESENT
IN THIS CHAMBER



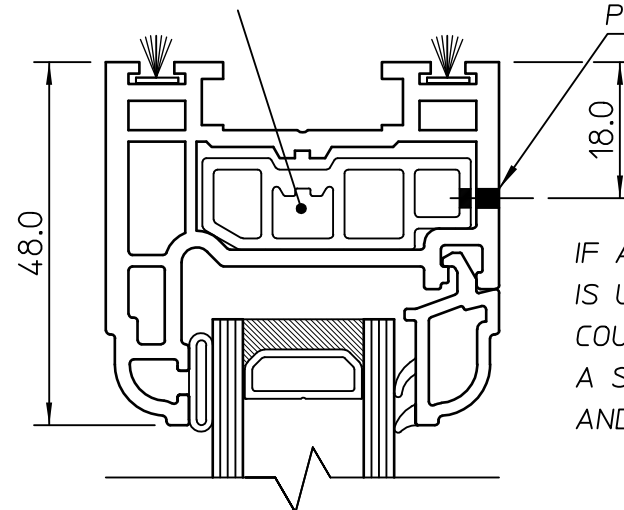
DRILL 2.5mm
PILOT HOLES

If Trickle Vents are not fitted
the head rail may have steel
reinforcement in this chamber

IF STEEL REINFORCEMENT
IS USED, FIX USING 3.9 x 19mm
COUNTERSUNK SELF DRILLING
SELF TAPPING SCREWS

Or a pvc-u thermal insert

DRILL 2.5mm
PILOT HOLES



IF A PVC-U THERMAL INSERT
IS USED, FIX USING 4.3 x 19mm
COUNTERSUNK SCREWS, WITH
A SINGLE DEEP FAST THREAD
AND A GIMLET POINT